

ddd drop

RAPID ONE



CONFIGURE YOUR 3D PRINTER

Let your creativity run free

Every user has different demands and needs, so dddrop presents a scalable 3D printer; the dddrop RAPID ONE. You choose the dimensions of the build volume you need and decide which functions are most important for your application, and we will build it.

1. SIZABLE FRAME - P4

2. BED LEVELING - P4

3. ROOM CONTROL - P5

4. FILAMENT DRYING CABIN - P5

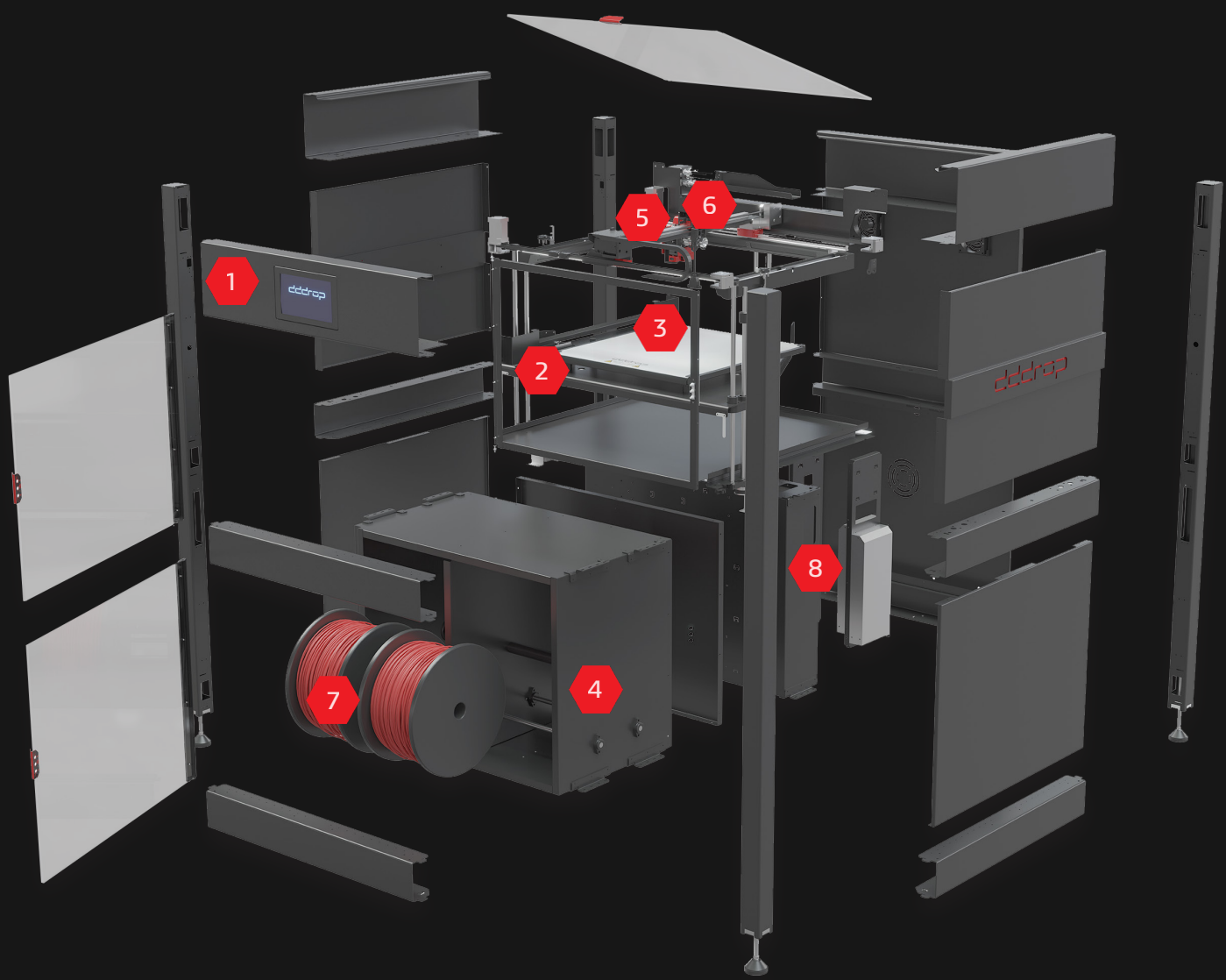
5. WATER COOLED - P5

6. PRINT HEAD CONFIGURATION - P6

7. MATERIALS - P7

8. SPECIFICATIONS - P8





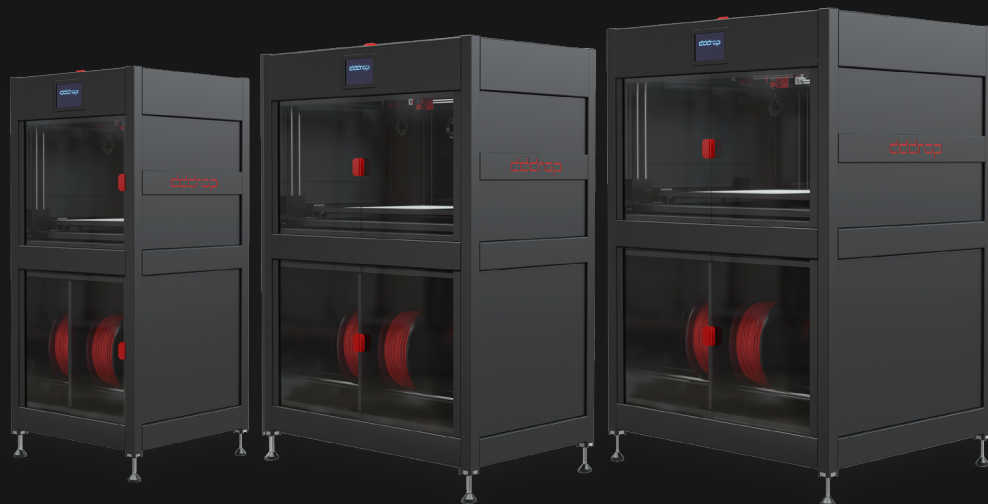


ddd drop

SIZABLE FRAME

Choose the print build volume you need

What differentiates the dddrop RAPID ONE from other 3D printers is its sizable frame. You can choose the dimensions of the build volume up to over one meter, assuming a minimum size of 300 x 300 x 300 mm, scalable in X - Y and Z directions.



BED LEVELING

For the perfect first layer

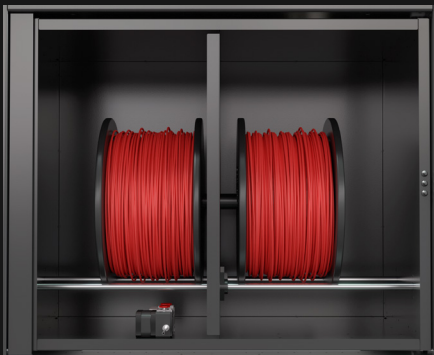
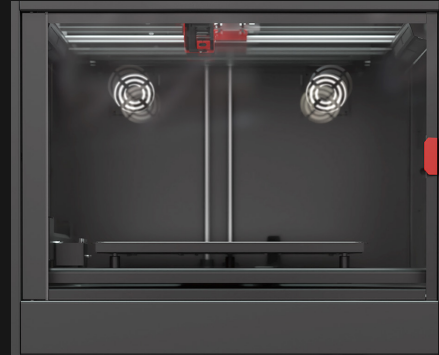
Leveling the print bed has never been this easy. The RAPID ONE is equipped with advanced bed leveling algorithms, which automatically adjust the distance between print head and print bed. A perfect first print layer is guaranteed.



ROOM CONTROL

Creating the optimum printing environment

The RAPID ONE has a closed print room, with fans in the rear wall and HEPA filters added. The print room can turn into a heated chamber.



FILAMENT DRYING CABIN

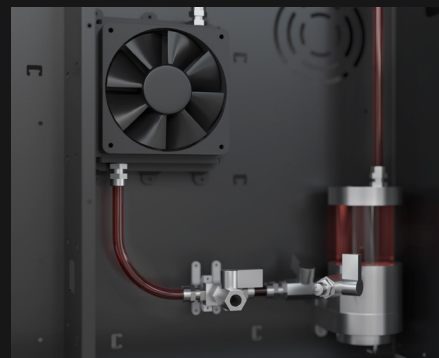
The ideal environment for filaments

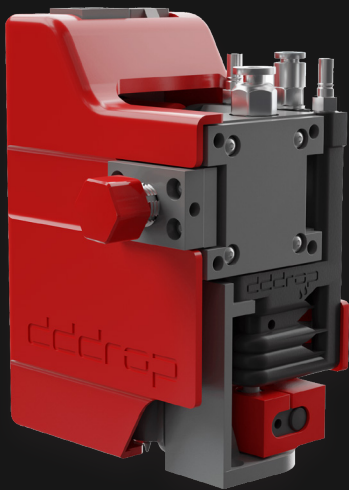
To achieve a perfect print you need to store the filaments rolls in a suitable environment. Filaments absorb moisture, which reduces print quality. An integrated drying room is the right environment to store the filaments.

WATER COOLED

For the optimal print result

Temperature control plays an important role in the print head as well. The water cooling system ensures a steady print head temperature at all times. This will result in high-quality 3D prints.





PRINT HEAD CONFIGURATION

Attach the print head that is suitable for your needs

Each print material requires a different print configuration to achieve the perfect 3D print. Our 3D printer specialists will advise you on putting together the right configuration for you.

We take into account the power of the heating element, the material of the nozzles (brass or tungsten carbide) and the diameter of the nozzle: 0.2 to 1.5 mm.

MATERIALS

Select the desired material

Thanks to the print head(s) being configured according to your need, the dddrop RAPID ONE is suitable for 3D printing with almost unlimited materials, such as:

- ABS
- PET-G
- Flexible materials
- PA
- PLA
- Fiber-filled materials
- PC
- PP
- (such as carbon fiber or fiber glass)



Filament rolls

The integrated base cabinet is optimally designed to store reels of different diameter that can be used in the print process. From 0.5 kg to 8 kg, the choice is yours.

Do you want to print with other materials or quantities? Ask for the possibilities.



SPECIFICATIONS

Choose your own configuration

GENERAL

Print head features (configure yourself)	<i>Interchangeable, water cooled, active 3D-print cooling, bed leveling sensor</i>
Nozzle size configuration	<i>From 0.2 to 1.5 mm</i>
Nozzle temperature	<i>275 - 450 °C</i>
Nozzle material	<i>Brass, Tungsten carbide</i>
Print bed features	<i>Easily interchangeable, heated, multipoint bed leveling</i>
Print bed max. temperature	<i>150 °C</i>
Print bed dimensions	<i>Min. 300 x 300 x 300 mm Max. 1050 x 1050 x 1050 mm</i>
Machine dimensions and weight - 300 x 300 x 300 mm print bed - 450 x 450 x 300 mm print bed - 600 x 450 x 300 mm print bed	<i>750 x 738.5 x 1499 mm, 160 kg 850 x 888.5 x 1499 mm, 190 kg 1000 x 888.5 x 1499 mm, 210 kg</i>
Print room features	<i>Closed print room, HEPA filter, temperature controlled environment</i>
Integrated base cabinet	<i>Filament dryer</i>
Max. printing speed	<i>200 mm/s</i>
User interface	<i>7 inch touchscreen</i>
Camera specifications	<i>Module 2MP USB wide angle 120° Fixed focus</i>
Connectivity	<i>USB, Wi-Fi, LAN</i>
Smart application	<i>Desktop, Google Play Store, iOS App Store</i>
Options	<i>Chamber heating, filament cabinet heating</i>



ENVIRONMENTAL PROPERTIES

Voltage and current cables	<i>230 V, 16 A, seperate electrical circuit required, no extension cables</i>
Power rating (standard version)	
- 300 x 300 x 300 mm print bed	<i>Max. 1000 W</i>
- 450 x 450 x 300 mm print bed	<i>Max. 2000 W</i>
- 600 x 450 x 300 mm print bed	<i>Max. 3000 W</i>
Ambient operating temperature	<i>15 - 35 °C</i>
Operating sound	<i>Standby: 41 dB Printing: 48 dB</i>

MATERIALS

Filament	<i>PLA, PET-G, ABS, PP, PC, PA, flexible & fiber filled Diameter 1.75 & 2.85 mm From 0.5 to 8 kg</i>
----------	--

SOFTWARE

Slicing	<i>i.e. Autoslicing, Simplify3D</i>
Printable format	<i>G-code</i>

CONTACT

dddop
Logistiekweg 34
7007 CJ DOETINCHEM
0314 377 050
info@dddop.com

MORE INFORMATION

dddop.com