

# ddd drop

## Nozzle replacement



## Models EVO Twin

**ENGLISH**

Translation of Dutch original

# ddd drop

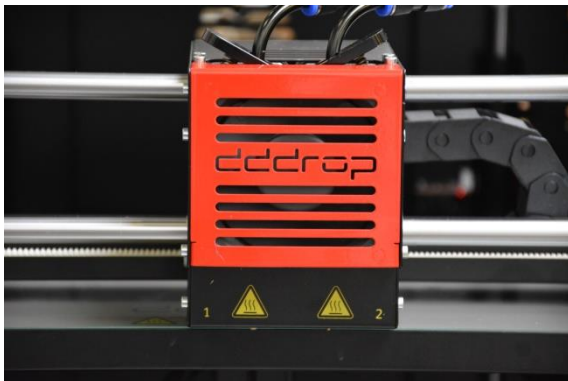
**A product of:**  
IF-Adamas B.V.  
Logistiekweg 34  
7007 CJ Doetinchem  
The Netherlands  
CS@ddd.com

## 1 Introduction

1. Remove the filament from the nozzle which requires replacing. This can be done by the *'change filament'* function.

**CAUTION! Make sure that the printer and nozzle components are completely cooled down before proceeding!**

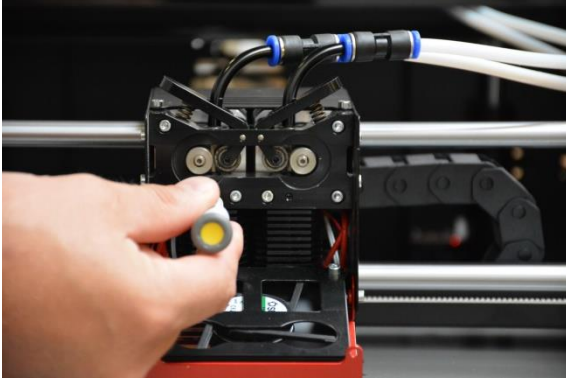
2. Move the printerhead to the center position in the front of the printer by hand as shown in the picture below.



3. Remove the two bolts (allen key 2,5) of the protective cover. When the bolts are removed, the cover can be removed by pulling it downward.



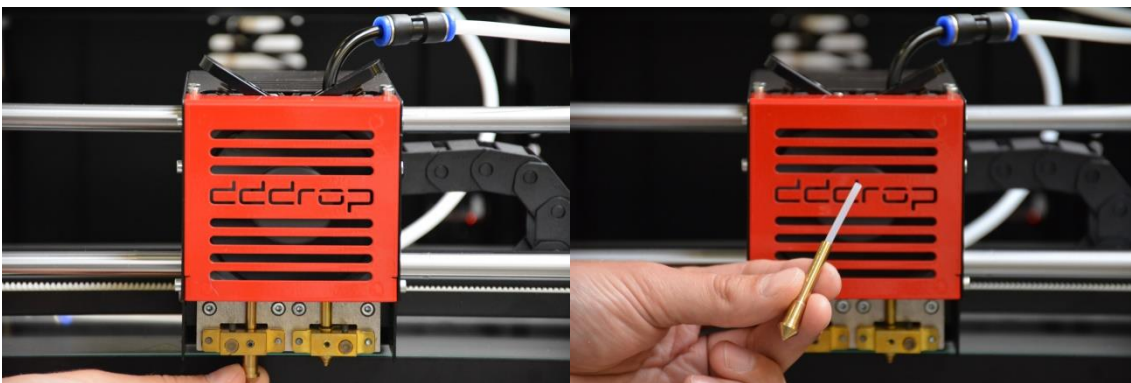
4. Open the red cover and loosen the cooler.



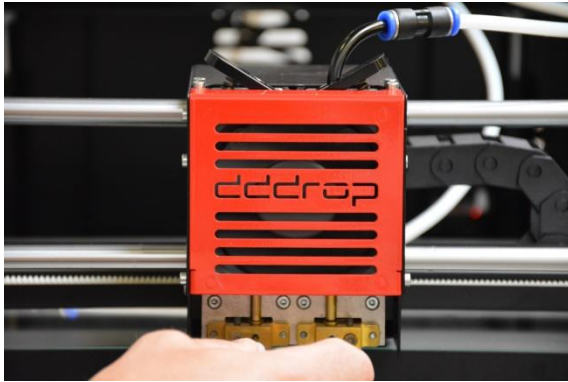
5. Slacken the set screw of the nozzle that needs replacing. (Allen key 1,5).



6. Slide the nozzle down and remove it from the printhead, including the teflon tube liner.



7. Mount a new nozzle by inserting it through the heater into the cooler. Push the nozzle all the way up whilst simultaneously guiding the teflon liner tube into the cooler. Make sure the teflon liner tube is not kinked. Fix the nozzle with the set screw (allen key 1.5). Tightening is not necessary until the alignment procedure (10).



**8.** Preheat the bed to 120 degrees. Align both nozzles by checking the distance between bed and nozzle. (Allen key 1.5).

**CAUTION: Parts are hot!**

Position the printhead in the center position in the front of the printer, above the dddrop logo. Alignment requires the same distance between bed and the unchanged nozzle, as with the bed and the changed nozzle, ensuring the same position in Z for both nozzles. This can be checked by using a piece of paper as a feeler gauge. The same (minimal) resistance should be felt when checking each nozzle individually. Only the changed nozzle needs re-adjustment. Tighten the set screw (allen key 1.5) and recheck alignment. Mount the protective cover with the two bolts (allen key 2.5).

**9.** Directly after this alignment procedure, the cooler needs to be repositioned on the cooler to ensure optimal teflon tube liner support.

Push the cooler down onto the nozzle and tighten the set screw (allen key 1.5). Tilt the red cover back.



**10.** Make a test print to ensure correct alignment of the nozzles.